

Only the Best Tasters can nurture a community of Quality

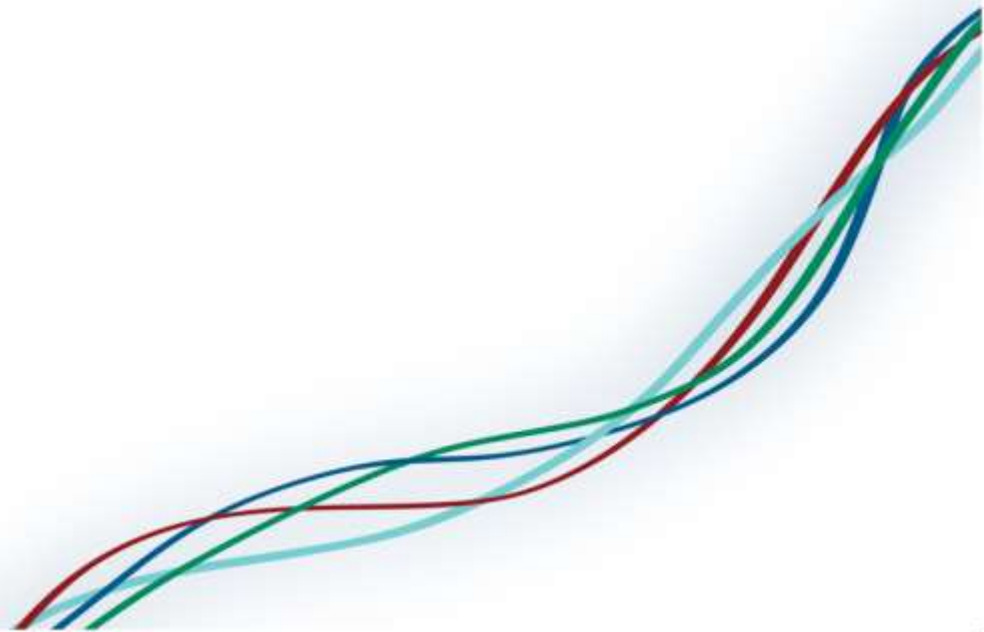
Aruna Singh
Global Sensory Manager

FlavorAct  **V™**

Only the Best Tasters can nurture a community of quality

Content

1. *How to get the **Best Tasters***
2. *How to develop and maintain a sensory community*



Recipe for Success

For the Best Tasters

You will need:

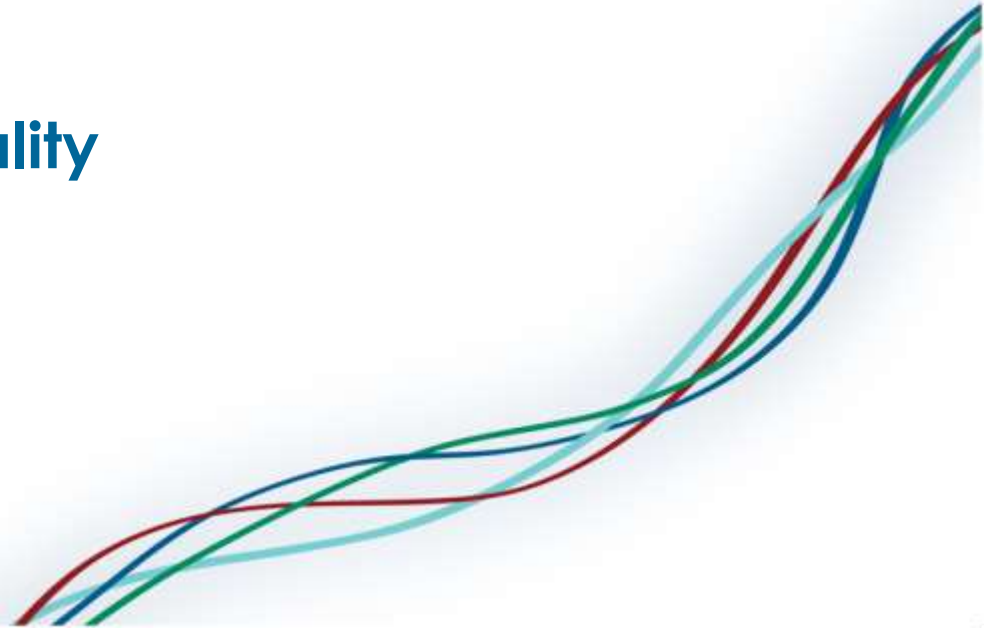
Sensory Plan

- Standardised training tools
- Training
- Proficiency



Community of Quality

- Operators
- QC personnel
- Relevant staff



Sensory Plan

Sensory
Training



Proficiency
Testing

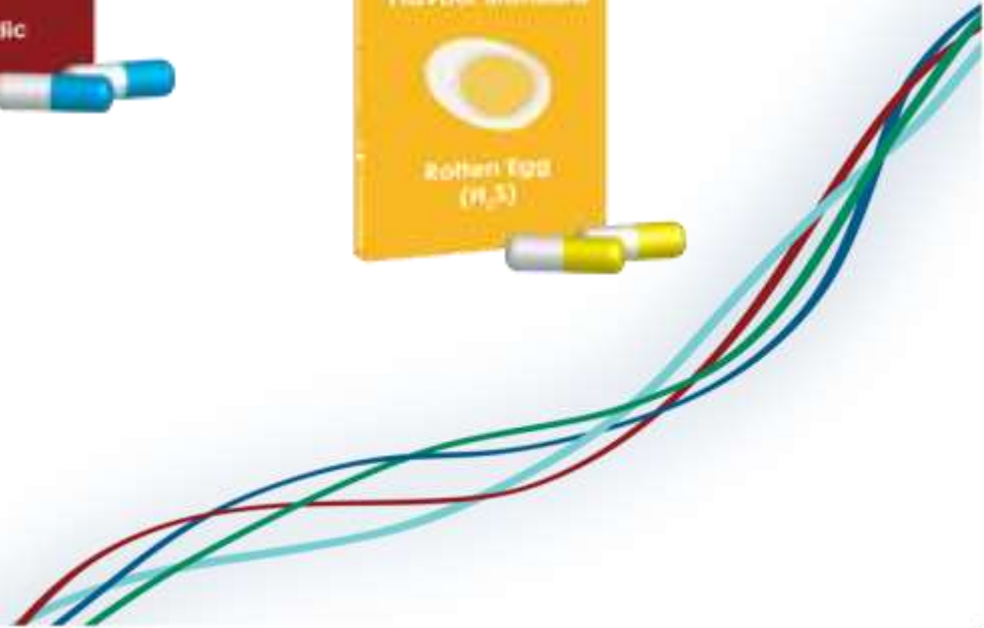


GMP Flavour
Reference
Standards



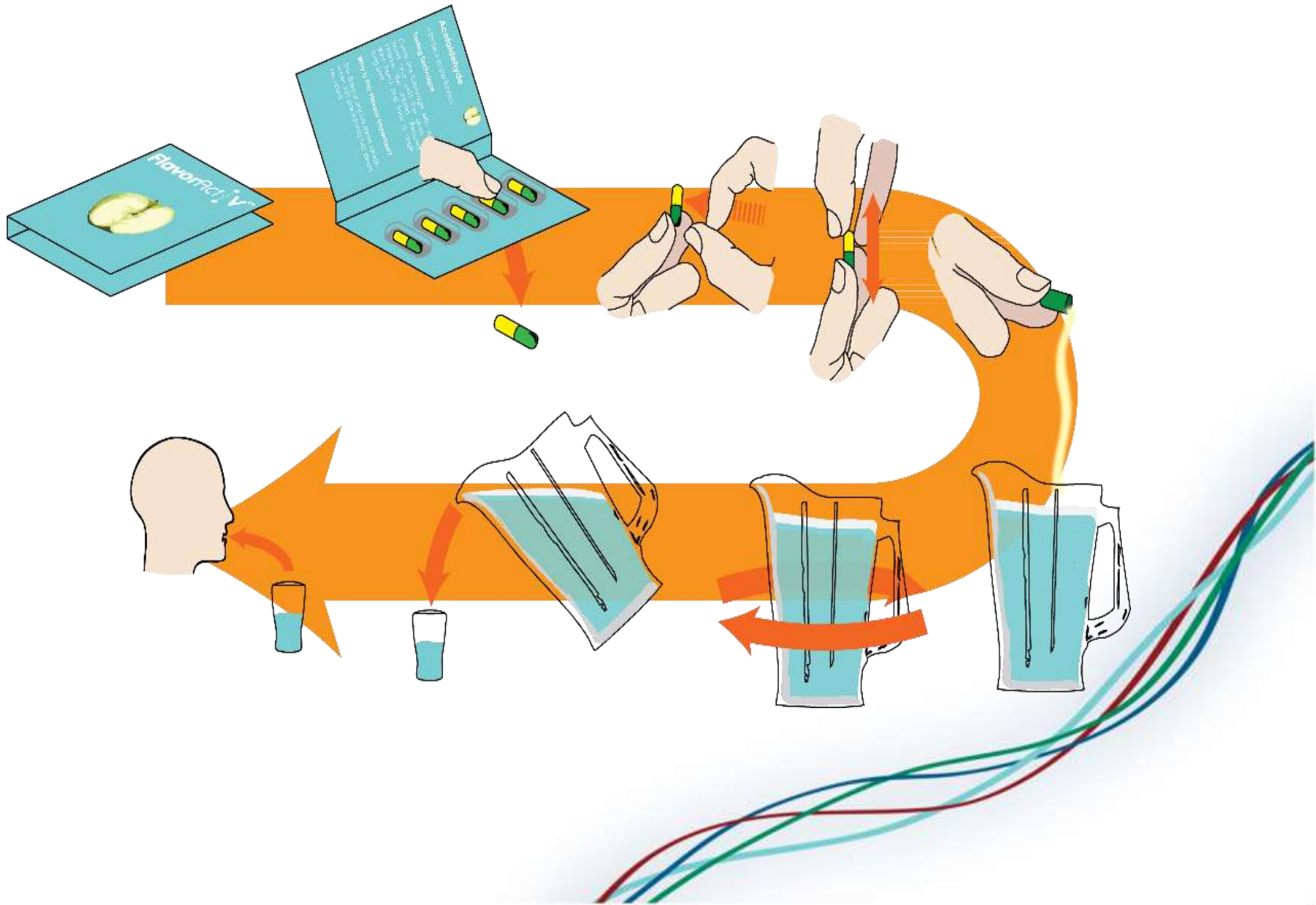


GMP Flavour Standards

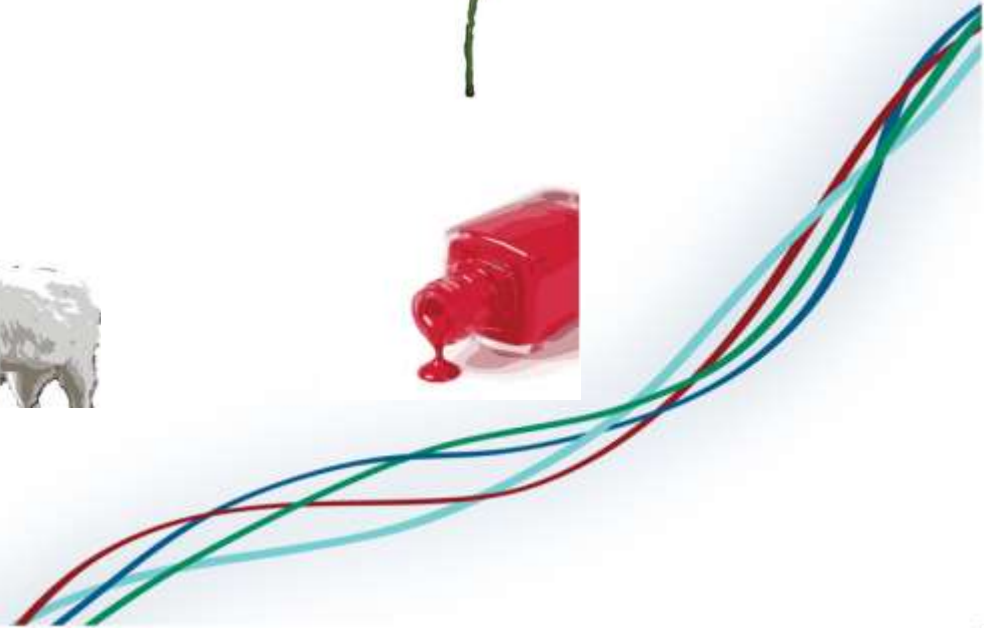


FlavorAct V™

GMP Flavour Standards



Visual Recognition Icons for each flavour



Training

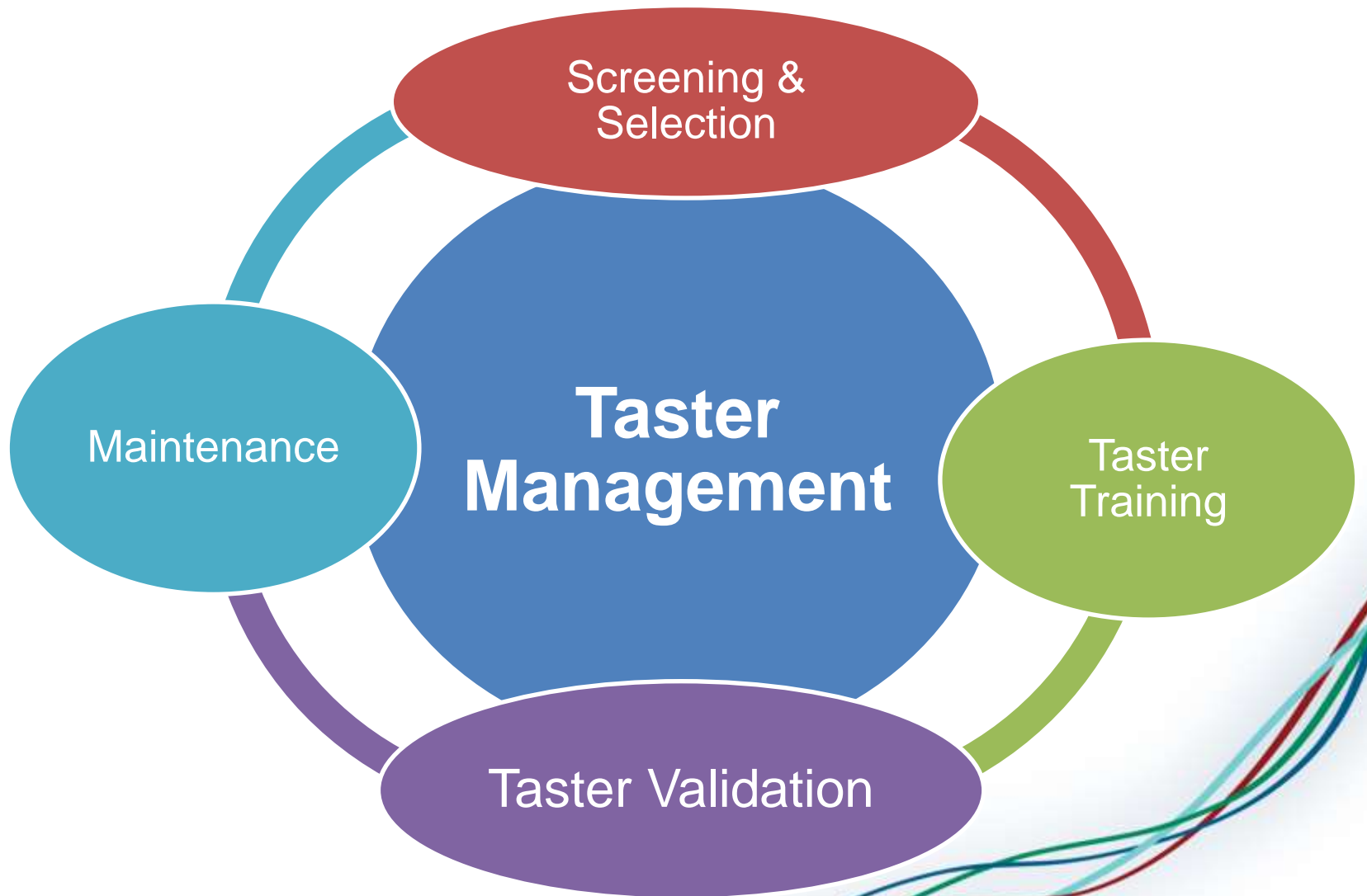


**Global Sensory
Trainers**

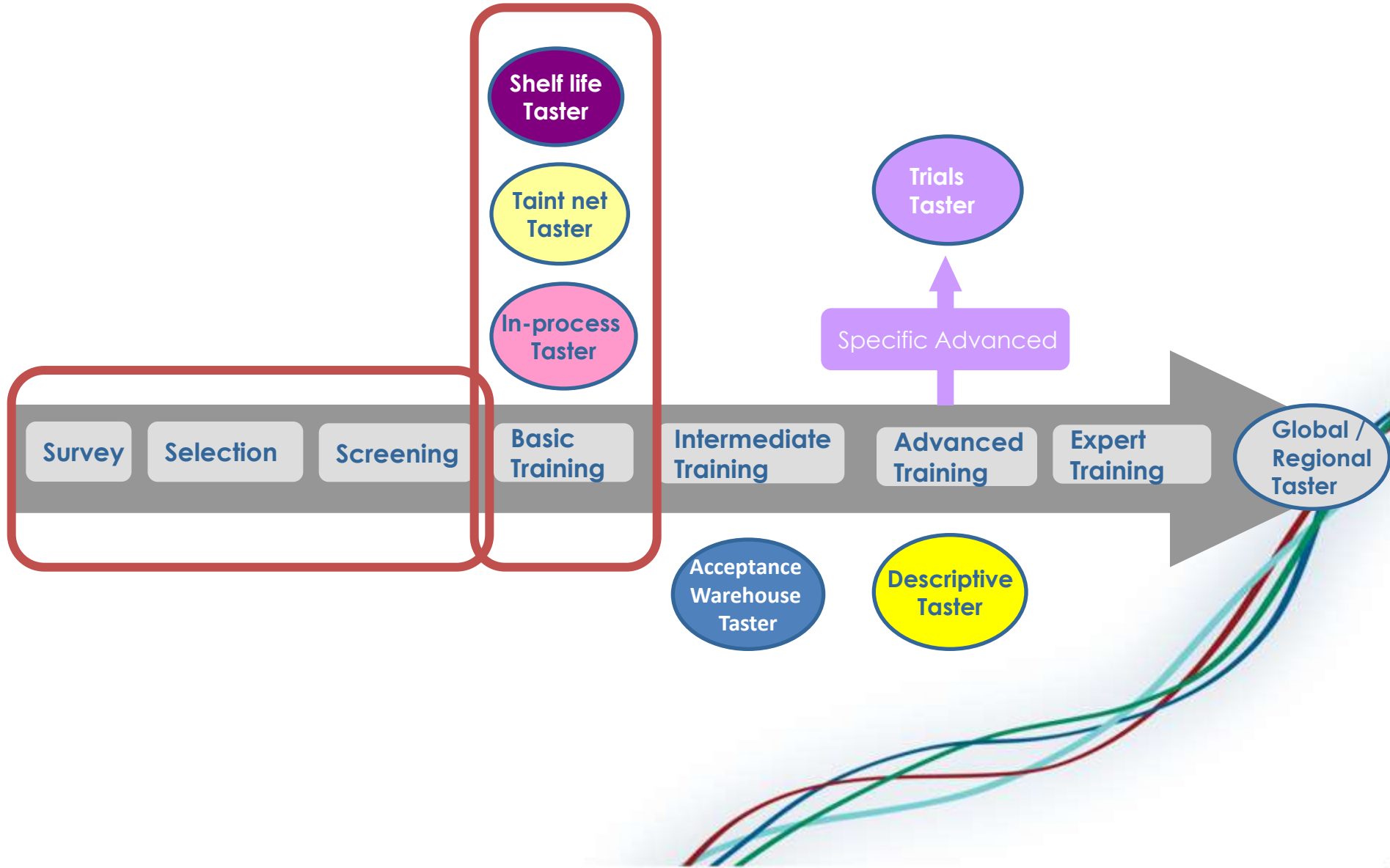
**Standardised training approach that can be
implemented in any plant anywhere in the world**



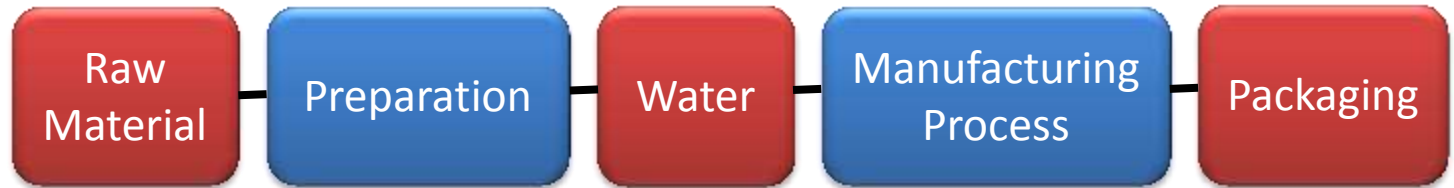
Training



Different levels of training



Different levels of training

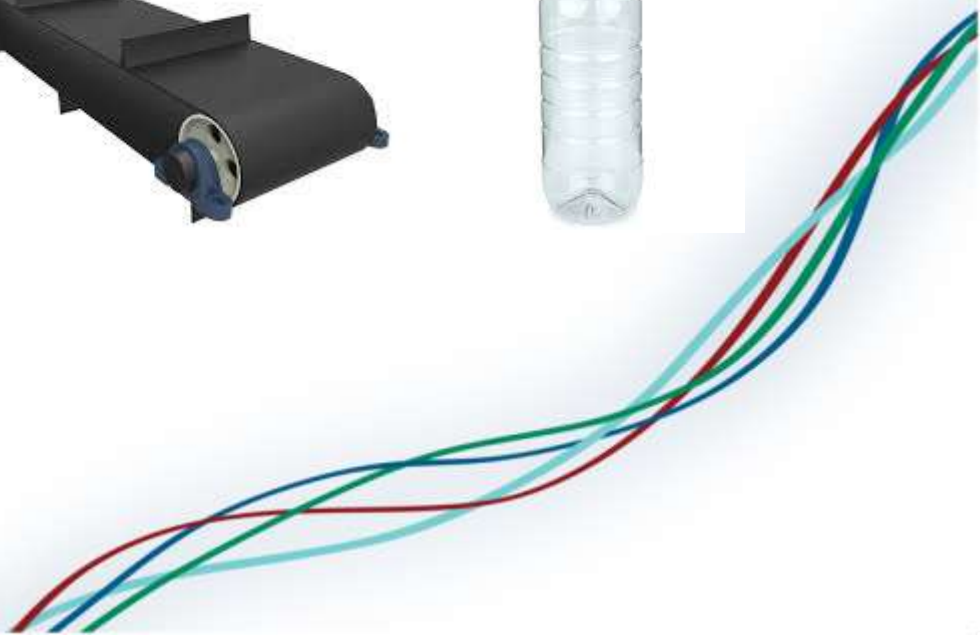
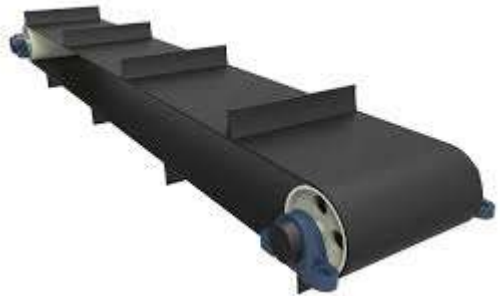


Shelf life
Taster

Taint net
Taster

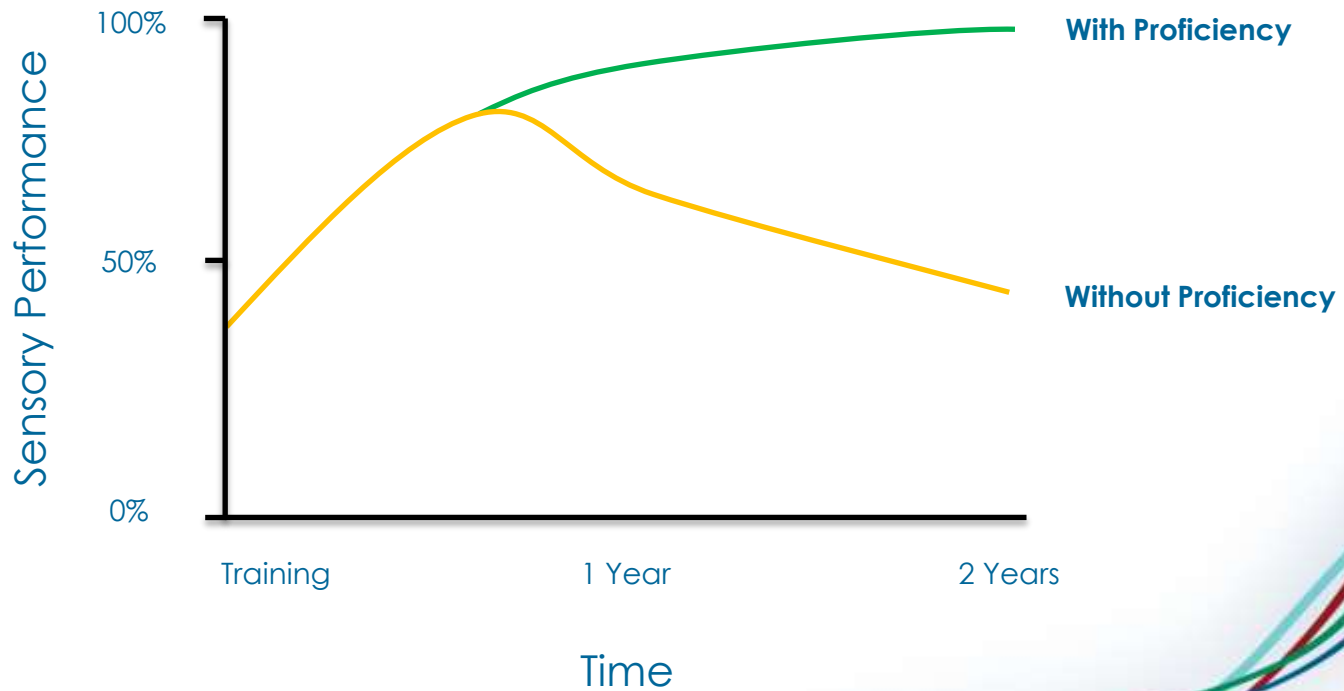
In-process
Taster

Basic
Training



Proficiency and Maintenance of Panel

Regular measurement of ability is the key to maintaining an effective and reliable panel



FlavorAct V™ GMP Standard Taster Validation



FlavorAct V™ Taster Validation Web based Portal



Taster Validation System

Welcome



log on

Log On

Please enter your user name and password.

Account Information

User name:

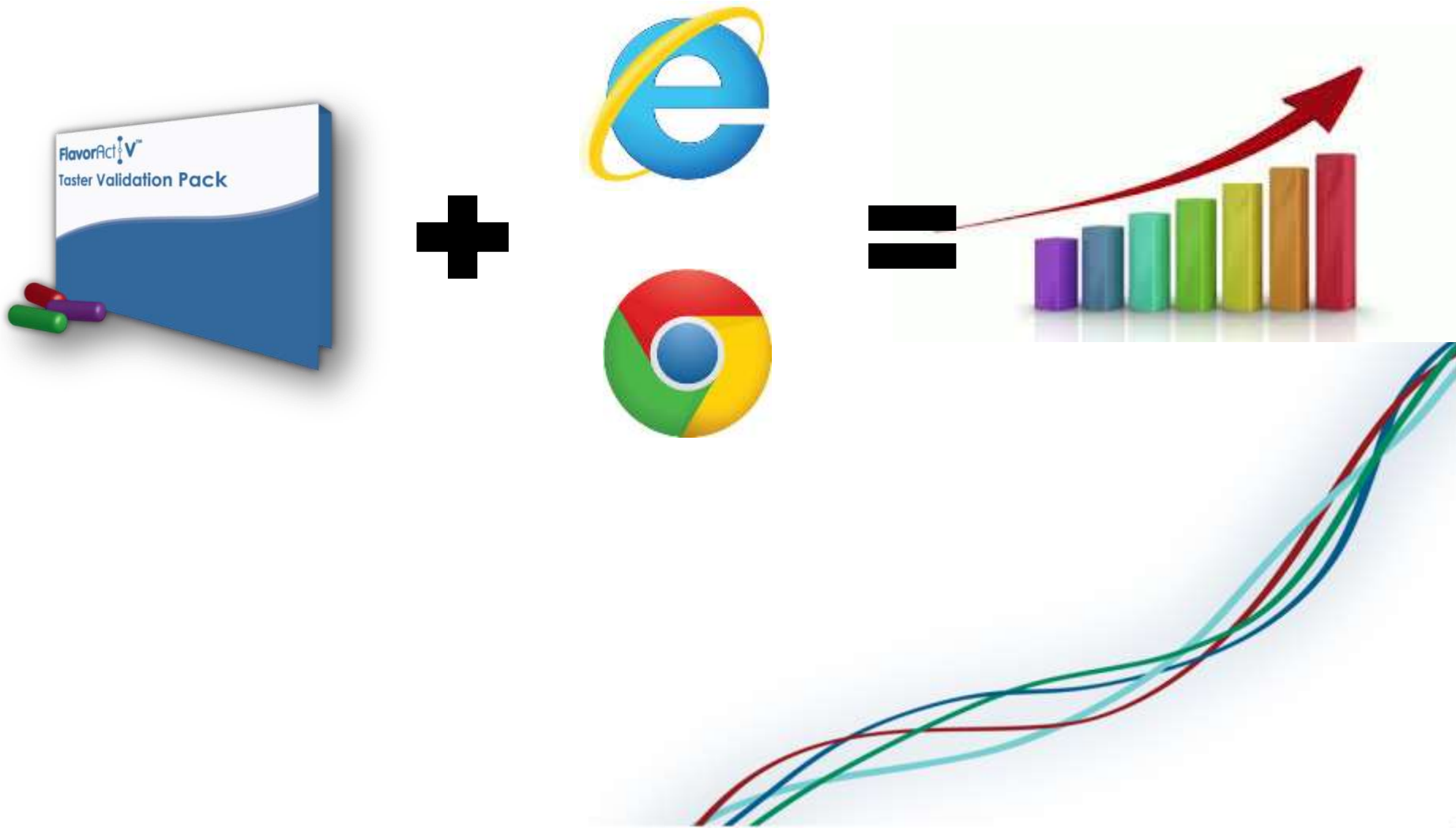
aruna

Password:

.....



Monitoring panel performance



Reporting Results

Analysis on Off-Flavour Recognition

% Proficiency

100

90

80

70

60

50

40

30

20

10

0

Earthy

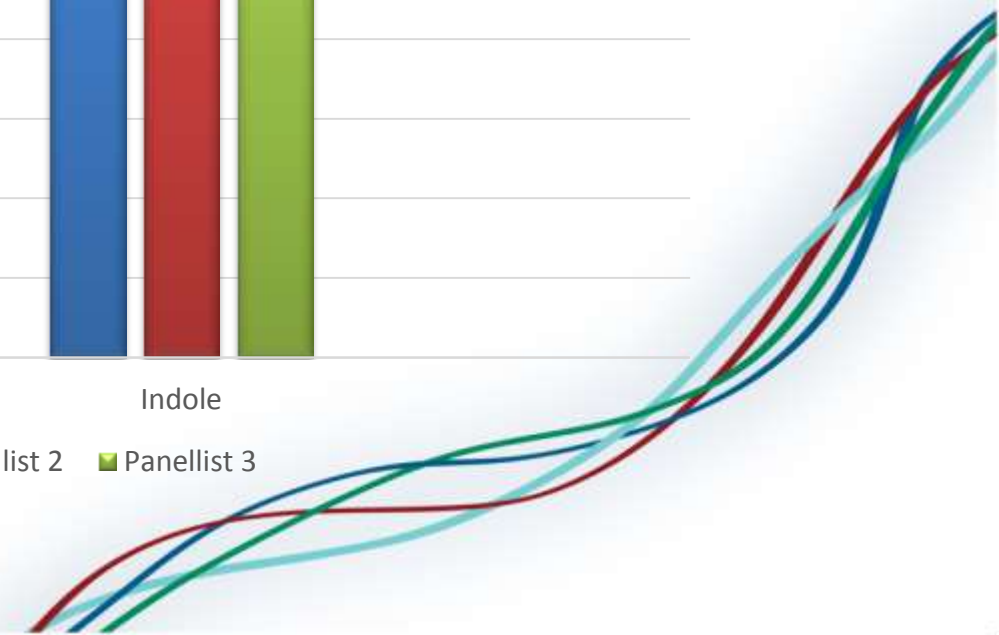
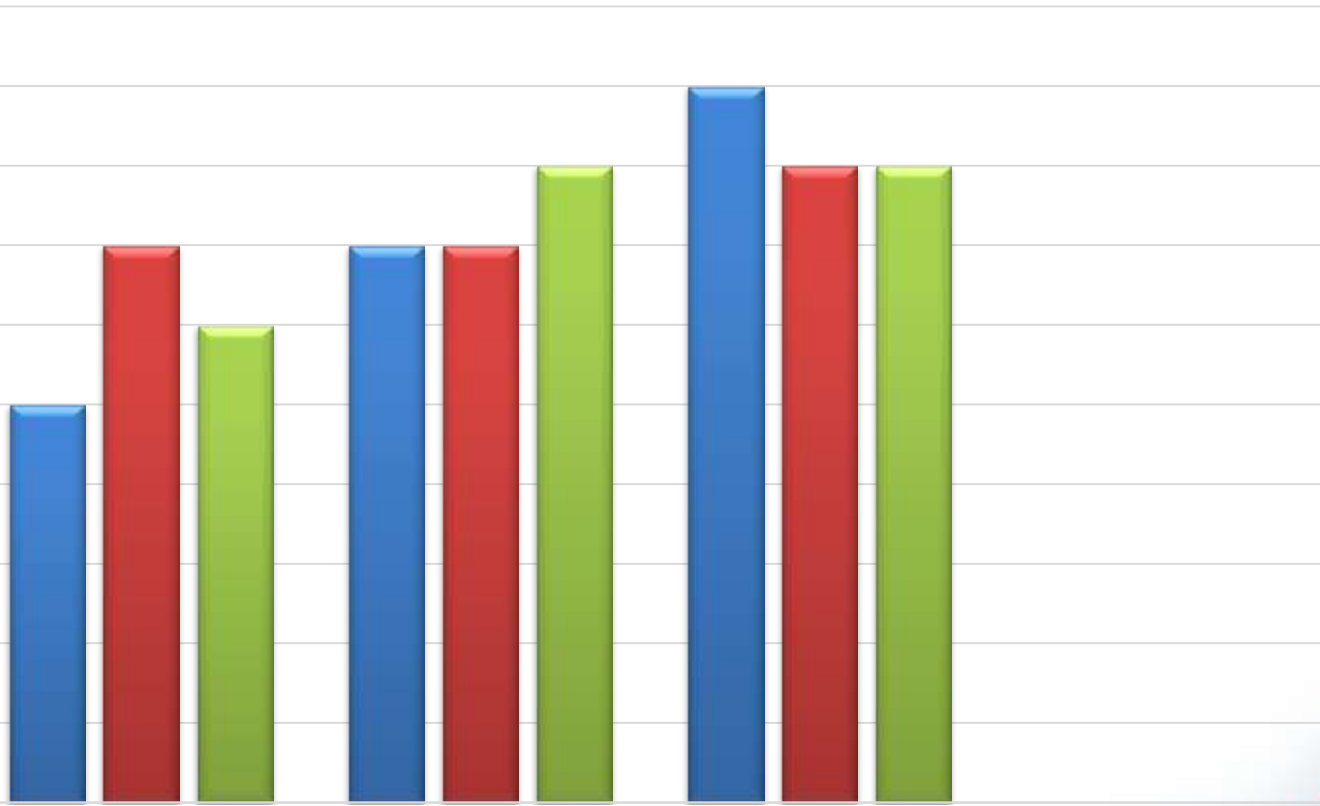
Medicinal

Indole

■ Panellist 1

■ Panellist 2

■ Panellist 3



Reporting Results on Re-Test

Analysis on Off-Flavour Recognition

% Proficiency

100

90

80

70

60

50

40

30

20

10

0

Earthy

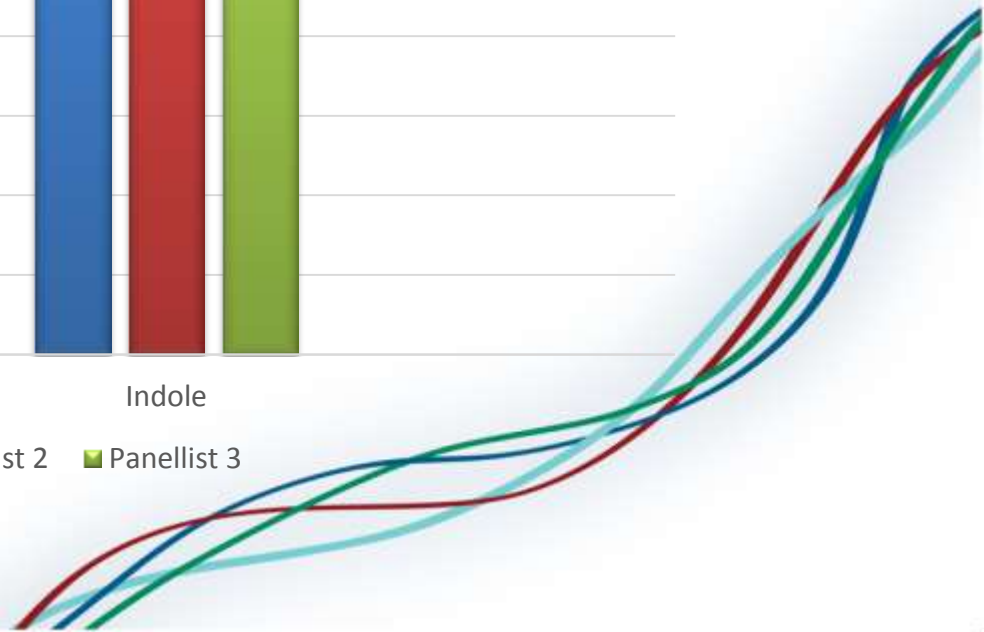
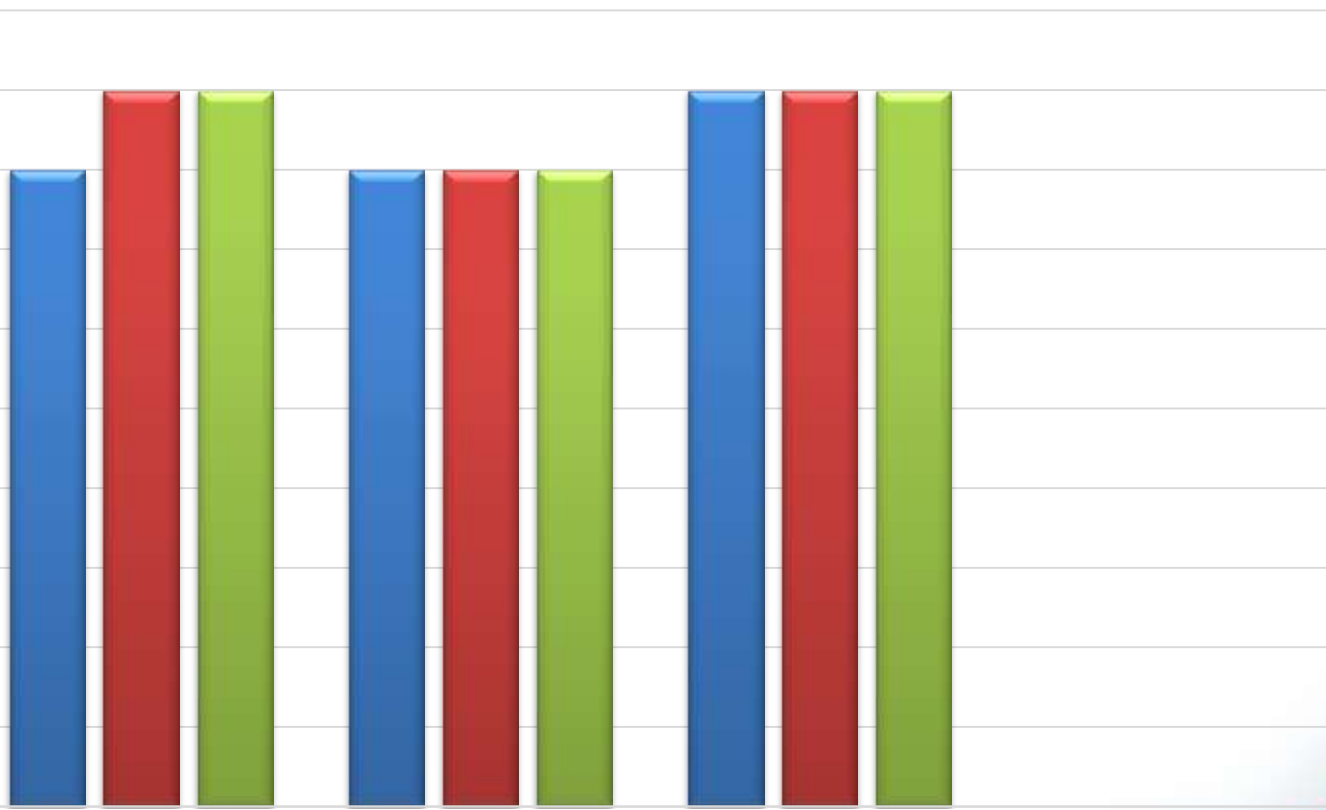
Medicinal

Indole

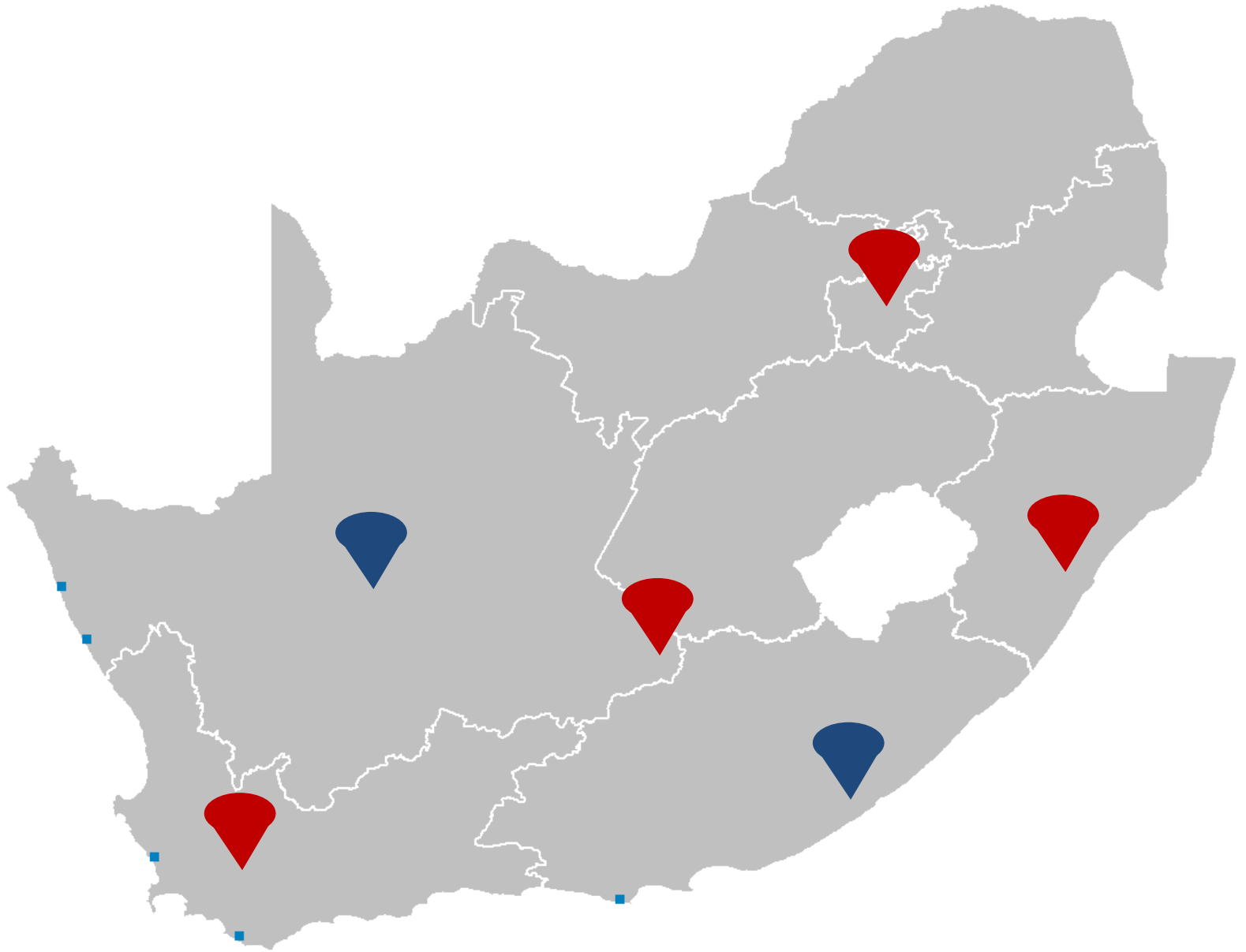
■ Panellist 1

■ Panellist 2

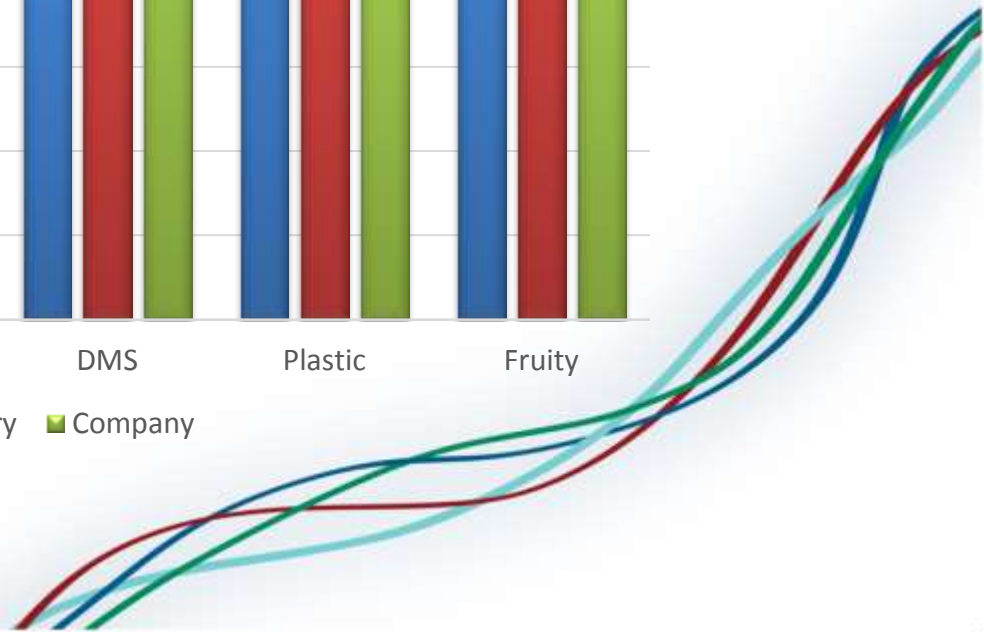
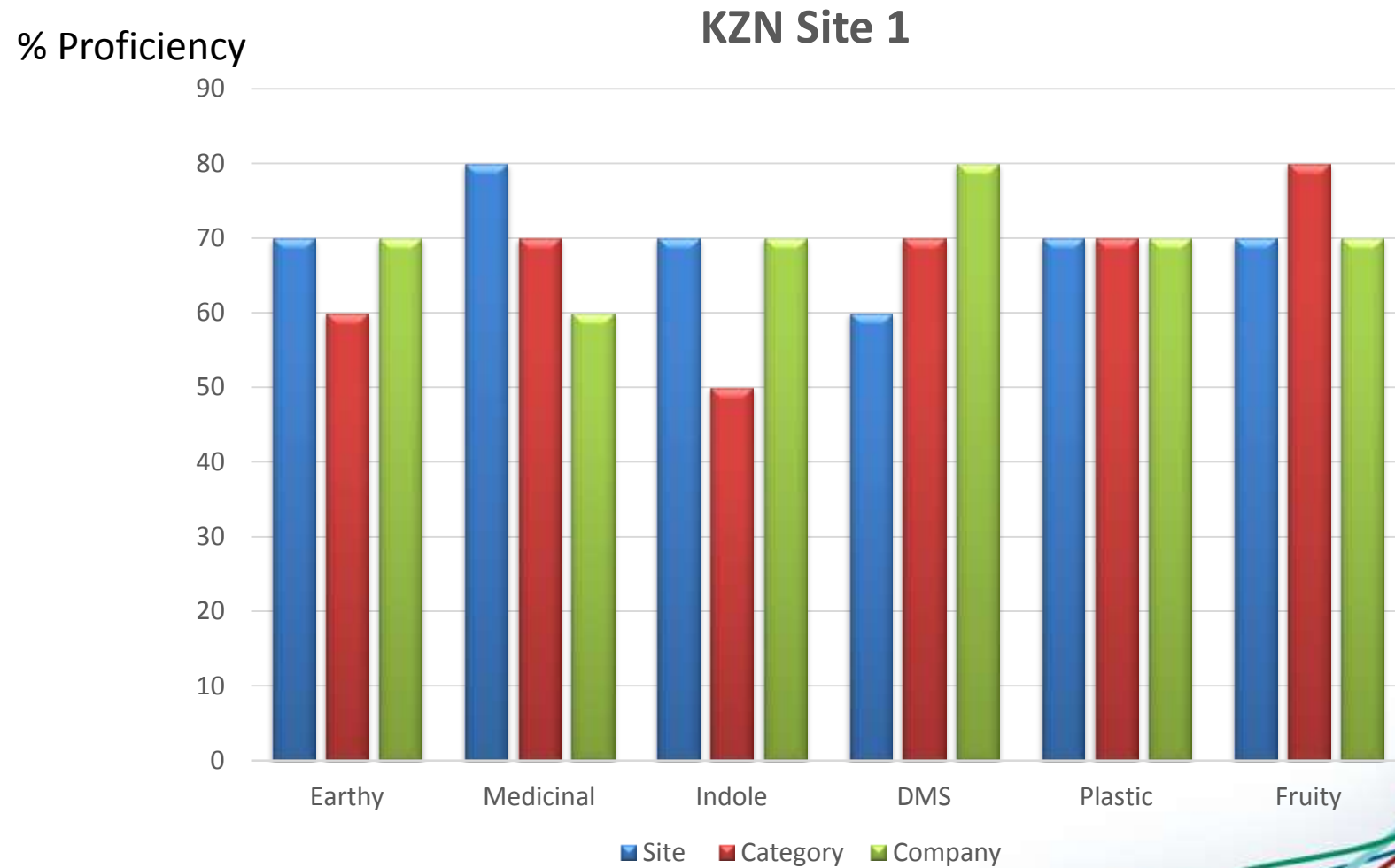
■ Panellist 3



Multiple Site Monitoring



Reporting Results on Multiple Sites



Summary and Conclusion

Integrating a sensory management plan of training, GMP flavours standards and monitoring proficiency, we are enabled with the tools and programme to evolve our sensory communities





Aruna Singh

www.flavoractiv.com

A series of four overlapping, wavy lines in shades of blue, green, red, and light blue sweep across the page from the bottom left towards the top right, creating a sense of movement and flow.

*FlavorActiV Limited
Sanderum House
Oakley Road
Chinnor
Oxfordshire
OX39 4TW
United Kingdom
Company No. 3205545*

Copyright © FlavorActiV Limited 2013